

Cheshire East Health and Wellbeing Board

Caring Together Update: November 2015

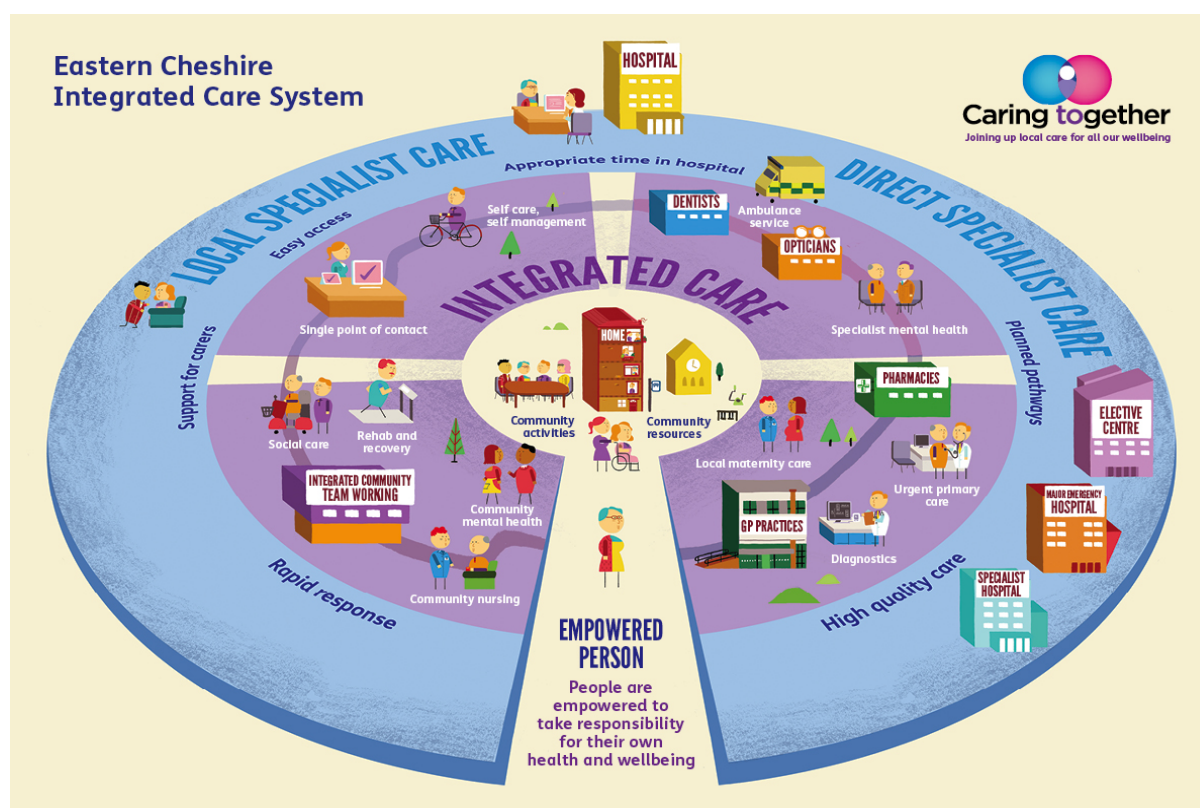
1. Introduction

Eastern Cheshire is taking a system wide approach to address the challenges of caring for the fastest ageing population in the North West of England within the available resources. The Caring Together vision of “joining up local care for all our wellbeing” was the first step of bringing together local people and professionals to co-design a new approach to care which has empowering people at its heart.

At the centre of the programme is the co-development of eight ambitions supported by a Caring Together Outcomes Framework, uniquely focussed on a new type of integrated care model. The development of the framework is the first step on the journey towards commissioning for outcomes.

Core to the Caring Together Programme is the introduction of an integrated care system as depicted in **Diagram 1**.

Diagram 1: Eastern Cheshire Integrated Care System



This paper provides an update on recent progress within the programme focussing specifically on 2 workstreams: Community Based Co-ordinated Care and Primary Care. It also provides an update on the recent changes to the governance structure for the programme.

2. Community Based Co-ordinated Care (CBCC)

CBCC is in the first phase of implementation of the integrated care system in Eastern Cheshire. There has been extensive work co-designing the care model and implementation plan. Work is now underway to commence implementation in 2015/16.

Over the next 3 years it is envisaged that more services and resources will transfer to complete the implementation of the new care system delivering care closer to home, person centred care and more proactive care. There will increasing focus on empowering people to take responsibility for their own health and wellbeing.

The new care model will provide co-ordinated care for people with short or long term care needs delivered as close to their home, as is practical, 7 days a week. The care model has been designed to meet the needs of the 20% of the population (or up to 40,000 people) who use 70% of all current health and social care resources. Care will be available to people over 18 years of age who are living and registered with a GP within the Eastern Cheshire CCG area.

Commissioners are working collaboratively to agree the financial baseline and additional investment required to deliver the new care model and the commissioning arrangements. Providers are collaborating to agree the resources needed and to agree the clinical governance arrangements.

The business case was originally scheduled to be presented to ECCCG Governing Body in October 2015 however this was postponed due to the delay in establishing and agreeing the financial baselines required for CBCC. Work on the business case is ongoing with a view to presenting the full business case to the CCG Governing Body by 31 March 2016 at the latest.

The STAIRRS element of CBCC is currently being tested by one early implementer general practice. Based on the experience of this practice there are now plans to test this service on a wider footprint during the winter period to provide a much needed alternative to hospital admission. Full implementation of STAIRRS is planned for April 2016.

A paper was presented to the Overview and Scrutiny Committee on 9 July 2015. The committee considered the level of engagement required by this project and advised

that this is a service improvement rather than a significant service change and therefore no formal consultation is required.

3. Primary Care

The CCG working in collaboration with NHS England and the 22 practices in Eastern Cheshire, has completed a review of services provided within general practice in Eastern Cheshire. The findings of the review have been used to inform the development of a new Caring Together service specification for general practice. The aim is to ensure that there is equity of access to the same range of high quality services regardless of which practice in Eastern Cheshire patients are registered with.

An additional £2m investment has been made available to support the implementation of the new service specification.

The service specification supports the delivery of the Caring Together vision, values and ambitions and also supports the delivery of the CCGs Five Year Strategic Plan

The final draft of the service specification was circulated to practices within Eastern Cheshire on 12 November 2015. Practices have until the 30 November to indicate their intention to sign up to the new contract and subsequent service specification. The CCG will need to make alternative commissioning arrangements for any practice not wishing to adopt the new service specification.

Individual implementation plans will be developed with practices as all practices are at a different stage of development. It is envisaged that the service specification will be implemented in full by 31 December 2016 at the very latest.

Once the service specification has been implemented in full more people will be cared for in the community, fewer people will be admitted to hospital as an emergency admission and anyone admitted will be discharged from hospital in a timely way. GPs will be able to spend more time with those patients suffering from long term and or complex conditions and they will be able to provide much support to enable people to take responsibility for their own health and wellbeing. People will be able to access much more care locally and avoid unnecessary visits to hospital and unnecessary tests and investigations.

4. Caring Together Governance

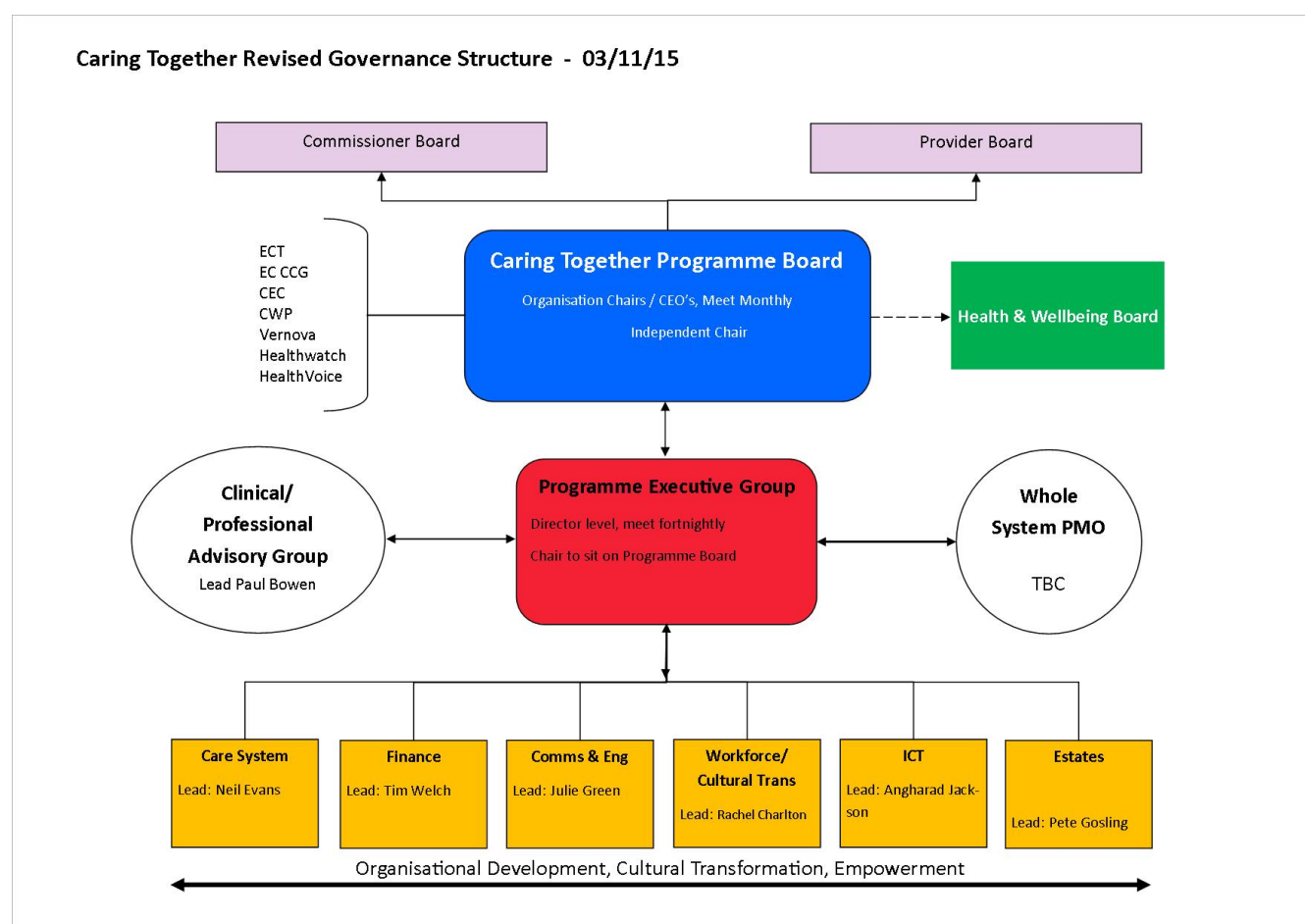
The Caring Together Programme is now moving into the implementation phase and it was agreed at the October 2015 Leadership Forum that the Caring Together Programme Governance arrangements would be revised to reflect this.

The current Programme Management Group is to be superseded by a Caring Together Programme Executive Group, comprising of executive director level representation from all partner organisations. To ensure there is pace of change, this group will meet initially on a fortnightly basis. The first meeting of the Programme Executive is scheduled to take place on 17 November 2015.

The Caring Together Leadership Forum will be superseded by a Programme Board comprising of the Chairs and Chief Executives of partner organisations. The Programme Board will be supported by the Programme Executive Group. The first meeting of the Programme Board is scheduled to take place on the 15 December 2015.

Diagram 2 outlines the new governance structure for the Caring Together Programme

Diagram 2: Revised Governance Structure Caring Together Programme



5. Next Steps

The current implementation plan for the Caring Together Programme is in the process of being refreshed.

In the meantime work will continue with regards to implementing CBCC, the new service specification for general practice and the modelling work to determine the future configuration of a local care system and the most appropriate organisational form to deliver this.

Fleur Blakeman

Strategy and Transformation Director

Eastern Cheshire CCG

13/11/2015